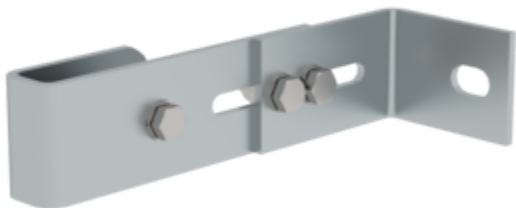


Order no.: 063250

Wall anchor, adjustable,  
165–205 mm, galvanised  
steel



Wall clearance min [mm]

- 165
- 215
- 275
- 375

Specification

Wall anchor Single	Wall distance min. 165 mm	Wall distance max. 205 mm	Adjustment range 40 mm	Material Galvanised steel
Weight 1.2 kg	Transport dimensions 200 x 135 x 60 mm, 1.2 kg	Business division MUNK Günzburger Steigtechnik	Order no. 063250	Price € 49.00

Facts

- Adjustment range enables flexible use
- Robust construction for secure hold
- A firm hold even during intensive use
- Adjustable wall anchor

Scope of supply

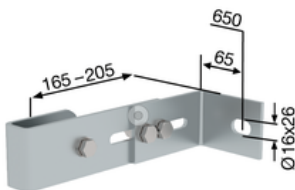
- Wall anchor: 1 x

Information on sustainability criteria

- Corporate certification: ISO 9001
- Corporate certification: ISO 14001
- Corporate certification: EN 1090
- Corporate certification: EcoVadis
- RoHS
- REACH
- The MUNK Group complies with a Code of Conduct
- The Supply Chain Act does not apply due to our size
- The materials used are listed in the technical specification
- Resource-saving production: own photovoltaic systems
- Energy-efficient consumption during production: LED lighting
- Repairability, durability and quality: 15-year warranty on series products made in Germany
- Recyclability: Our products are mostly made of aluminium, steel or wood and can be fed directly into the recycling process.
- Socially acceptable working conditions in production: fair wages, gender equality
- Economical and recyclable packaging: no use of polystyrene, predominantly use of wood and cardboard, small amounts of plastic
- No health hazards for the users

## More product pictures

---



## Added value

---

### Optimum planning

- Practical planning aids (available as [Downloads](#)) with tips for correct planning of vertical ladder systems
- Planning in close coordination with the client as well as the place and purpose of use
- Joint project planning



All [fixed ladders / vertical ladders](#) at a glance:

- [Single-flight vertical ladders](#) in accordance with DIN 18799-1/-3, DIN 14094-1 and DIN EN ISO 14122-4 (depending on the choice of standard and the situation on site at the exit, additional components such as exit steps, railings and safety doors may be required)
- DIN 18799-1: Stationary multiple-flight vertical ladders [on buildings](#)
- DIN 14094-1: Multiple-flight [emergency ladder systems \(emergency ladders\)](#)
- DIN EN ISO 14122-4: Stationary multiple-flight vertical ladders [on machinery](#)

# Corporate certifications

on sustainability criteria

