



Order no.: 042706

Single-sided stepladder
250 kg with clip-step R13



Number of steps

- 3
- 4
- 5
- 6
- 7
- 8

Specification

Working height 3.4 m	Step design Steps	Number of steps/rungs 6 steps	Platform included as step Yes	Step depth 80 mm
Step/Rung distance 235 mm	Type of non-slip protection clip-step R13	Height 2.05 m	Platform height 1.38 m	Base spread 1.17 m
Inclination 70 °	Lower outer width 550 mm	Depth of side-rails 73 mm	Depth of side-rails, support 58 mm	Width of side-rails 25 mm
Max. load capacity 250 kg	Design type Freestanding Single-sided access	Transport dimensions 2190 x 548 x 165 mm, 9.5 kg	Business division MUNK Günzburger Steigtechnik	Order no. 042706

Facts

- Stepladder made of aluminium
- 80 mm deep steps and large platform
- Stable rectangular tube side-rails
- 'safe-cap' ladder joint
- clip-step R13 step padding for certified non-slip protection

- 4-fold edged step-to-side-rail connection
- Conical side-rail guide for safe stance
- nivello® ladder shoes with patented 2-axis inclination technology
- ergo-pad® grip area with clamping mechanism
- Practical storage tray with integrated hooks and tool holders
- From five steps or more: Spreader lock with two high-strength polyester straps
- Step spacing: 235 mm
- Ladder inclination: 70°
- Maximum load: 250 kg

Scope of supply

- Ladder: 1 x

Information on sustainability criteria

- Corporate certification: ISO 9001
- Corporate certification: ISO 14001
- Corporate certification: EN 1090
- Corporate certification: EcoVadis
- RoHS
- REACH
- The MUNK Group complies with a Code of Conduct
- The Supply Chain Act does not apply due to our size
- The materials used are listed in the technical specification
- Resource-saving production: own photovoltaic systems
- Energy-efficient consumption during production: LED lighting
- Repairability, durability and quality: 15-year warranty on series products made in Germany
- Recyclability: Our products are mostly made of aluminium, steel or wood and can be fed directly into the recycling process.
- Socially acceptable working conditions in production: fair wages, gender equality

- Economical and recyclable packaging: no use of polystyrene, predominantly use of wood and cardboard, small amounts of plastic
- No health hazards for the users

More product pictures



Added value

Industrial grade

Stable and robust for tough everyday working life (including 4-way edging)

- Corrosion-resistant fixtures
- Use of high-quality and high-strength materials
- Versatile and practical accessories



Storage tray

- For the practical storage of small parts
- Made from high-quality plastic
- Partly with integrated hooks and tool holders
- Different versions, depending on the ladder model



Ladder joint safe-cap

- Smooth ladder joint with large contact surface and sturdy plastic protective cap
- The 6 rivets and thicker wall thickness provide for greater stability and protection at this sensitive point on the ladder, increasing its service life
- The safe-cap protects the ladder when in use, when loading and storing, as well as the contact surfaces, walls, truck loading areas and the joint itself



The movable ladder shoe sets new standards in stability

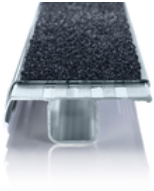
[Learn more](#)



clip-step R 13 step padding

Certified non-slip protection for step ladders

- Fulfils the requirements of the highest possible non-slip class R 13 thanks to aluminium oxide particles
- Improves work safety in wet and oil-contaminated environments
- Applied up to the maximum accessible step as a visual check
- Retrofittable, available as a spare part and also in yellow in selected lengths (RAL 1021)



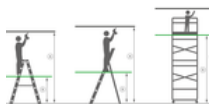
ergo-pad® grip area

For easier and more ergonomic handling at the optimum carrying point

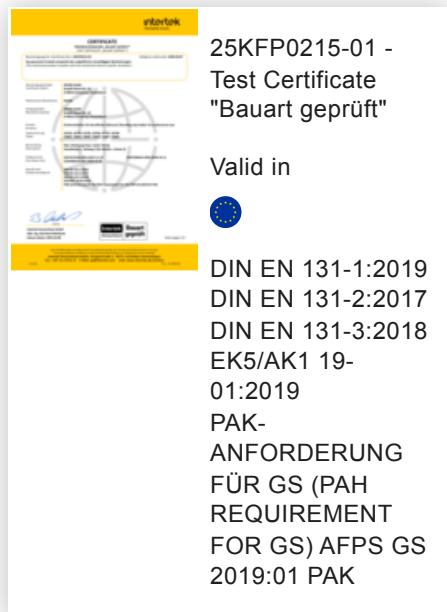


Note: Working heights

- National regulations (e.g. TRBS 2121 Part 2 in Germany) must be complied with with regard to the maximum working height when using the ladder as a workstation.
- Information on [TRBS 2121 Part 2](#) has been summarised on our Service page
- Read our [tips and tricks](#) on how to calculate [working height](#)



Certificates



Corporate certifications

Standards for quality and sustainability

